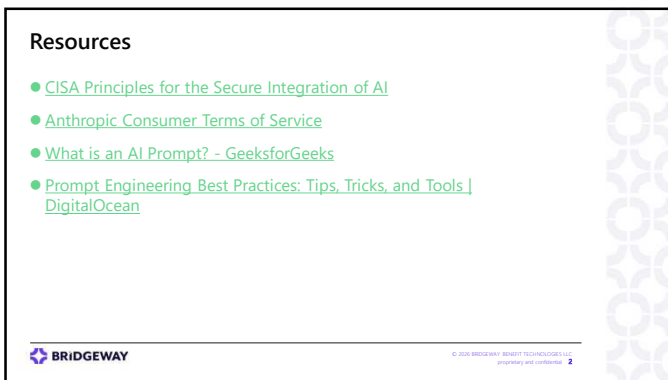
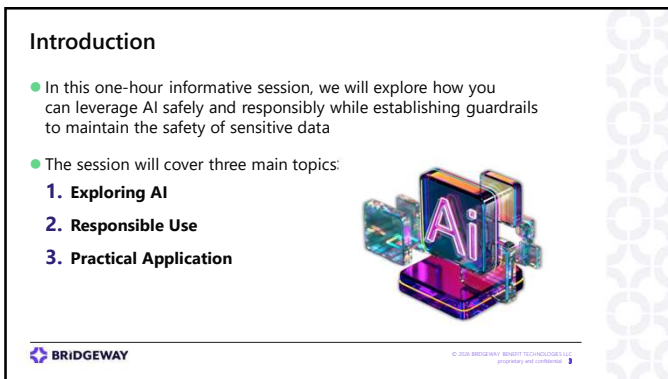




1




2



3

Exploring AI

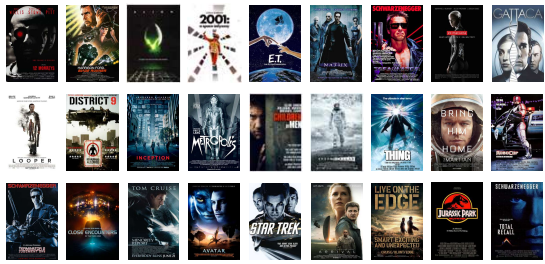


BRIDGEWAY

© 2024 BRIDGEWAY BENEFIT TECHNOLOGIES, LLC
proprietary and confidential 4

4

AI in Pop Culture




BRIDGEWAY

© 2024 BRIDGEWAY BENEFIT TECHNOLOGIES, LLC
proprietary and confidential 5


5

What is AI?


- A machine-based system that can, for a given set of human-defined objectives, make:



Predictions



Recommendations



Decisions

BRIDGEWAY

© 2024 BRIDGEWAY BENEFIT TECHNOLOGIES, LLC
proprietary and confidential 4

6

What AI Isn't

- A source of truth

The screenshot shows a search result for the query "Is there water in the swimming pool on the Titanic?". The result includes a title: "The Titanic's first-class swimming pool does not currently contain water and is unlikely to be intact on the ocean floor." Below the title is a "Historical Context" section with a small image of the pool's interior. The text describes the pool as a heated saltwater swimming pool for first-class passengers, located on the starboard side of F Deck near the bottom of the grand staircase. It was 20 feet long by 14 feet wide and included changing rooms and showers. The pool was a novelty at the time, open to women in the morning and men in the afternoon, with a small fee for use, and it was only filled while the ship was at sea to ensure clean water.

BRIDGEWAY

© 2024 BRIDGEWAY BENEFIT TECHNOLOGIES LLC
proprietary and confidential 7

7

What AI Isn't

- A replacement for
 - Research
 - Policy, legal, or actuarial judgment

Reliance on Outputs and Actions. Artificial intelligence and large language models are frontier technologies that are still improving in accuracy, reliability and safety. When you use our Services, you acknowledge and agree:

- Outputs may not always be accurate and may contain material inaccuracies even if they appear accurate because of their level of detail or specificity.
- Actions may not be error free or operate as you intended.
- You should not rely on any Outputs or Actions without independently confirming their accuracy.
- The Services and any Outputs may not reflect correct, current, or complete information.

- According to Anthropic

BRIDGEWAY

© 2024 BRIDGEWAY BENEFIT TECHNOLOGIES LLC
proprietary and confidential 8

8

How Generative AI Works

The flowchart illustrates the process of generative AI. It starts with a "Prompt" box containing the text "Generate a LinkedIn post caption for a product launch". An arrow points from the prompt to an "AI tool" box. Below the AI tool box are logos for Copilot, Claude, ChatGPT, and Gemini. Another arrow points from the AI tool box to a "Final Response" box containing the text "Excited to announce the launch of [Product Name]! ...".

BRIDGEWAY

© 2024 BRIDGEWAY BENEFIT TECHNOLOGIES LLC
proprietary and confidential 9

9

Why Do We Use It?

BRIDGEWAY

© 2024 BRIDGEWAY BENEFIT TECHNOLOGIES LLC
proprietary and confidential

10

AI in the Day-to-Day

BRIDGEWAY

© 2024 BRIDGEWAY BENEFIT TECHNOLOGIES LLC
proprietary and confidential

11

Responsible AI Use

BRIDGEWAY

© 2024 BRIDGEWAY BENEFIT TECHNOLOGIES LLC
proprietary and confidential

12

AI Policy

- Designed to set clear expectations for how AI is used responsibly, safely, and consistently across the organization.

```
graph TD; Q1[Do we support the use of AI?] -->|Yes| Q2[Do we need an AI policy?]; Q1 -->|No| Q3[You need an AI policy]; Q2 -->|Yes| Q3;
```

BRIDGEWAY

© 2024 BRIDGEWAY BENEFIT TECHNOLOGIES LLC. All rights reserved. Property and Confidentiality.

13

What Should Your Policy Do?

- Define acceptable and unacceptable uses of AI & tools
- Protect sensitive data and systems
- Reduce risk from unintentional use and Shadow IT
- Clarifies who is accountable for AI decisions and outcomes
- Enable responsible, consistent use

BRIDGEWAY

© 2024 BRIDGEWAY BENEFIT TECHNOLOGIES LLC. All rights reserved. Property and Confidentiality.

14

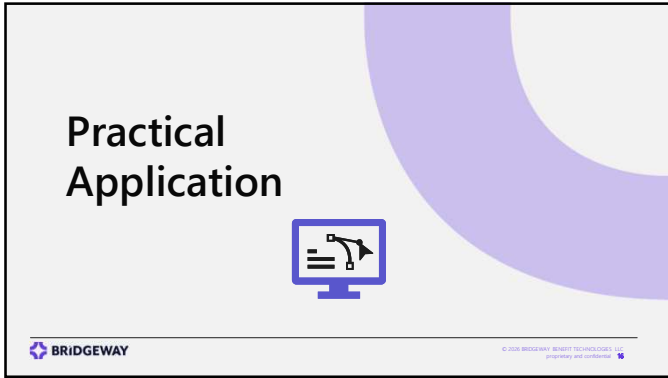
How to Choose the Right Tool

- Identify Needs** - What problems are you trying to solve?
- Assess Risks** - How is my data used?
- Security** - How compliant is the tool?

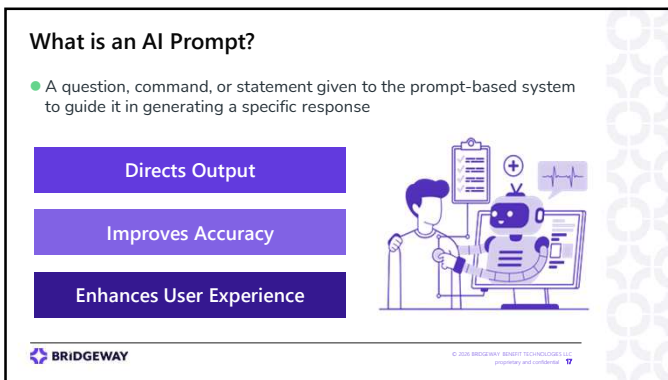
BRIDGEWAY

© 2024 BRIDGEWAY BENEFIT TECHNOLOGIES LLC. All rights reserved. Property and Confidentiality.

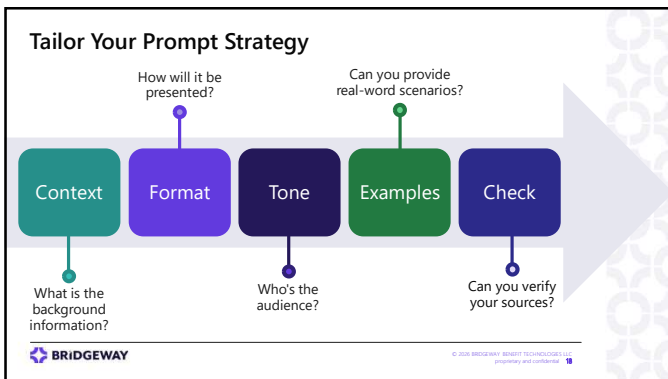
15



16



17



18


Use Cases for Your Fund Office

- Operations**
 - Transcribe meetings to create impactful summaries for stakeholders
 - Create action items based on notes and email threads
 - Maintain living documentation by updating artifacts as processes evolve
- Documents**
 - Assist in drafting SOPs to streamline workflows
 - Turn dense policies into a redlined summaries
 - Compare multiple document versions to highlight meaningful changes
- Communications**
 - Draft emails including outreach and follow-ups
 - Rewrite emails and messages to reflect tone, length, clarity
 - Generate talking points or FAQs in advance of announcements
- Problem Solving**
 - Find an efficient solution for a problem
 - Compile research to back a claim
 - Generate frameworks or decision trees for complex choices


BRIDGEWAY © 2024 BRIDGEWAY BENEFIT TECHNOLOGIES LLC
proprietary and confidential

19


Final Recap



Exploring AI



Responsible Use



Practical Application

BRIDGEWAY © 2024 BRIDGEWAY BENEFIT TECHNOLOGIES LLC
proprietary and confidential

20



Reno Nevada
BRIDGEWAY
2026 USERS GROUP CONFERENCE
Thank You

BRIDGEWAY BENEFIT TECHNOLOGIES LLC
WWW.BRIDGEWAYBENEFIT.COM

21
